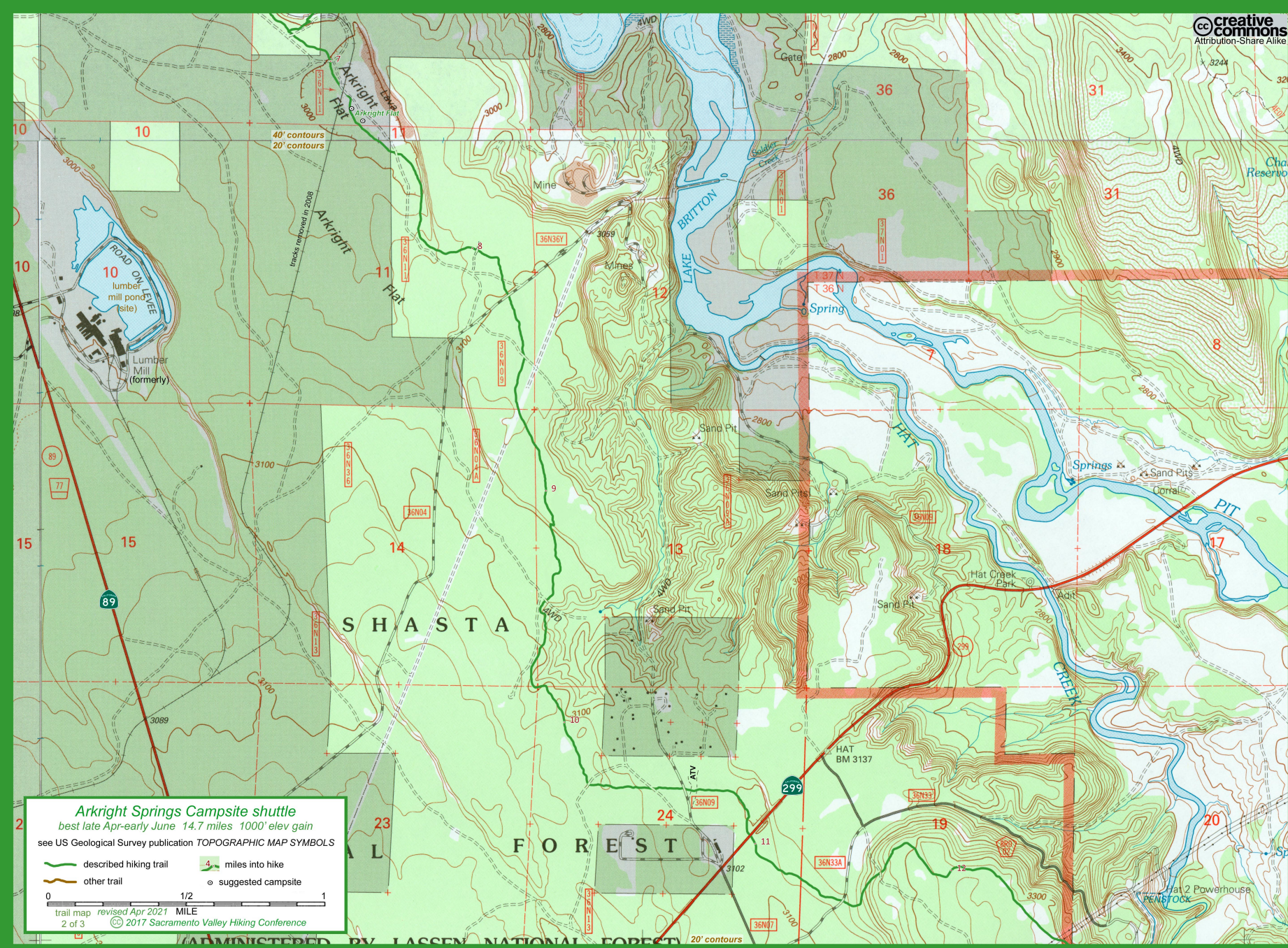


**Akright Springs Campsite shuttle**  
 best late Apr-early June 14.7 miles 1000' elev gain  
 see US Geological Survey publication TOPOGRAPHIC MAP SYMBOLS

- described hiking trail
- other trail
- 4 miles into hike
- suggested campsite

0 1/2 1  
 trail map revised Apr 2021 MILE  
 1 of 3 © 2017 Sacramento Valley Hiking Conference





### Arkright Springs Campsite shuttle

best late Apr-early June 14.7 miles 1000' elev gain

see US Geological Survey publication TOPOGRAPHIC MAP SYMBOLS

- described hiking trail
- other trail
- 4 miles into hike
- suggested campsite

0 1/2 1 MILE

trail map revised Apr 2021  
2 of 3 © 2017 Sacramento Valley Hiking Conference



# Arkright Springs Campsite shuttle

best late Apr-early June 14.7 miles 1000' elev gain

see US Geological Survey publication TOPOGRAPHIC MAP SYMBOLS

described hiking trail

other trail

4 miles into hike

suggested campsite

0

1/2

1

trail map 3 of 3

revised Apr 2021 MILE

© 2017 Sacramento Valley Hiking Conference

