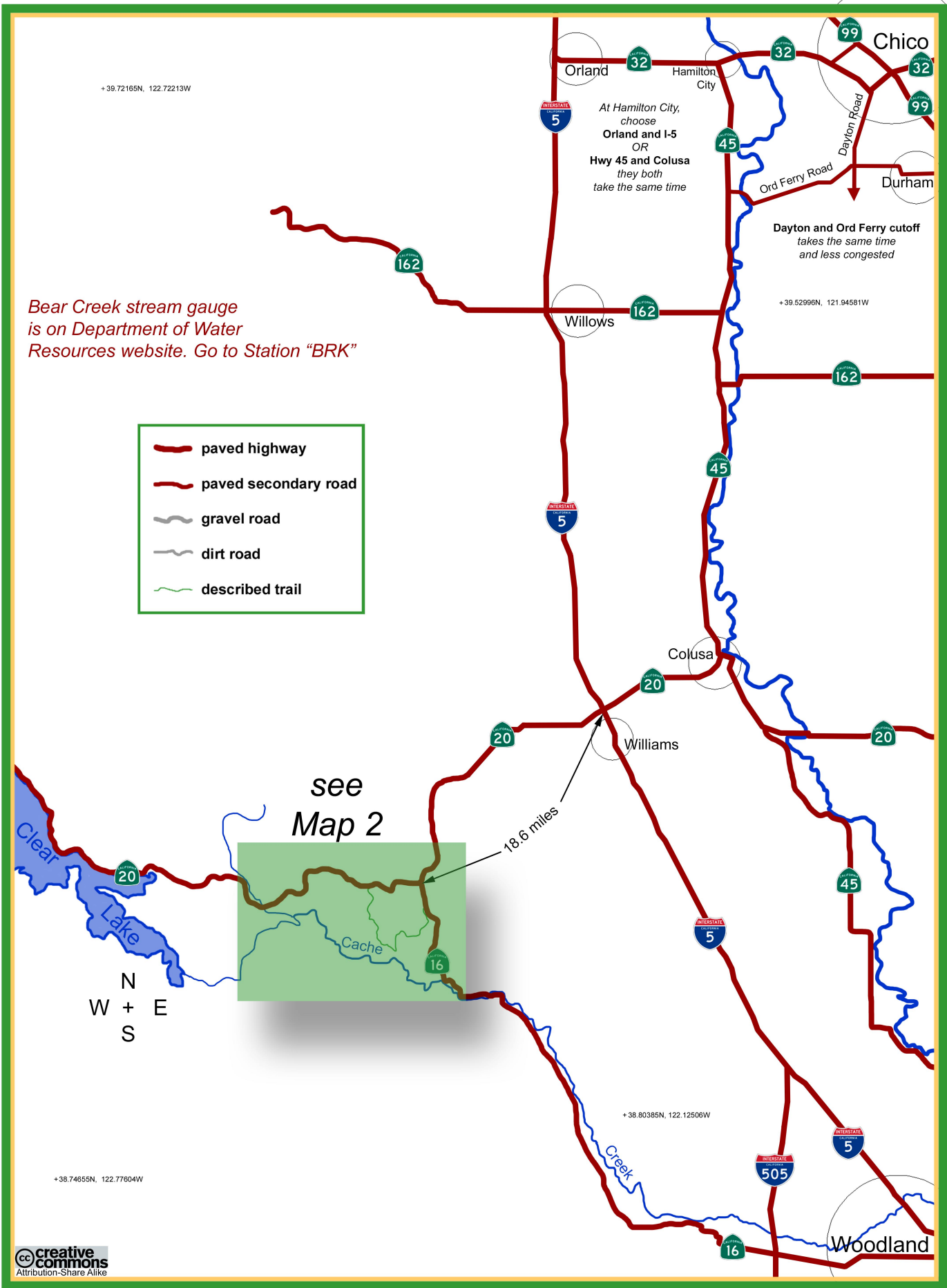
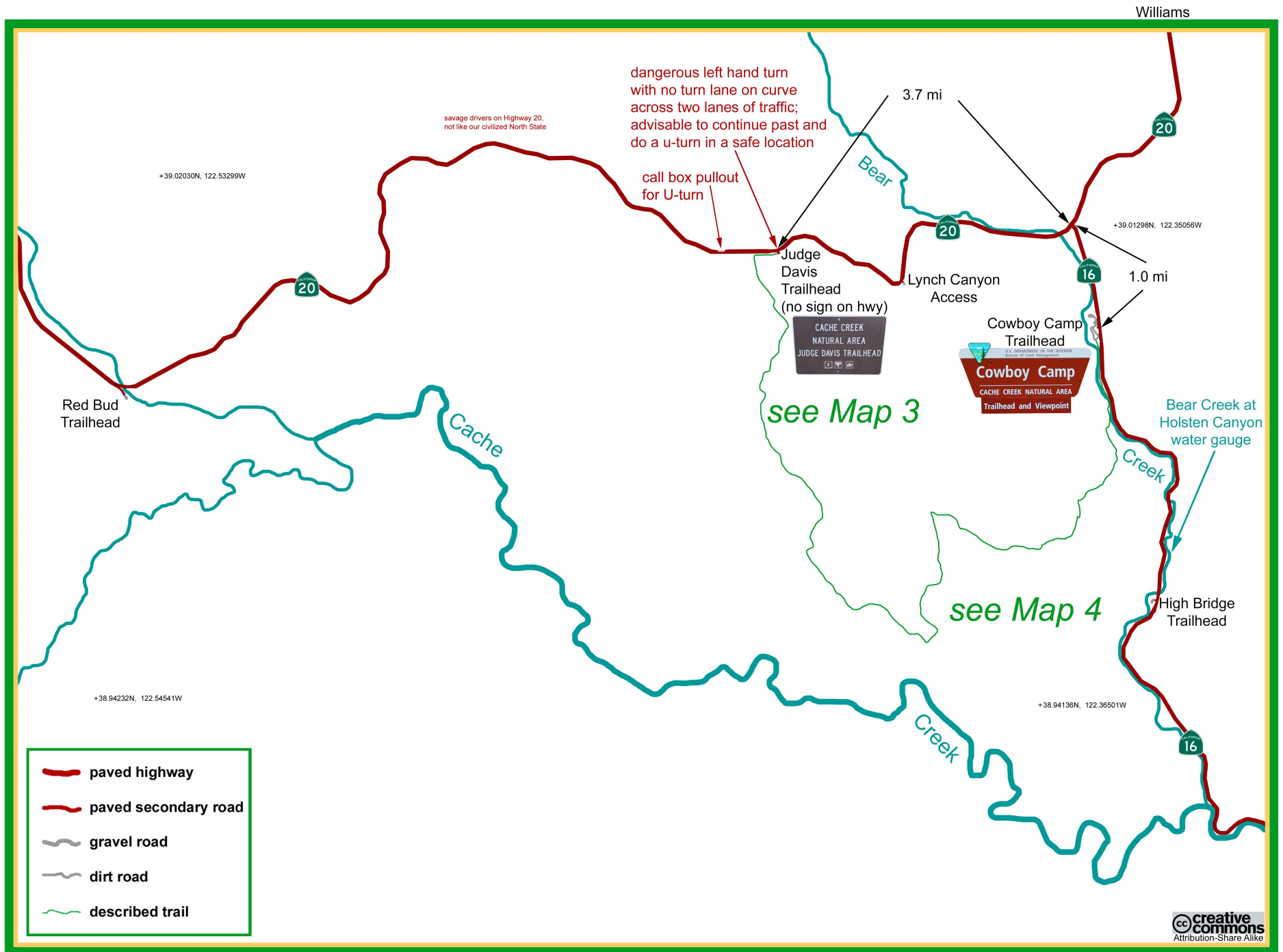
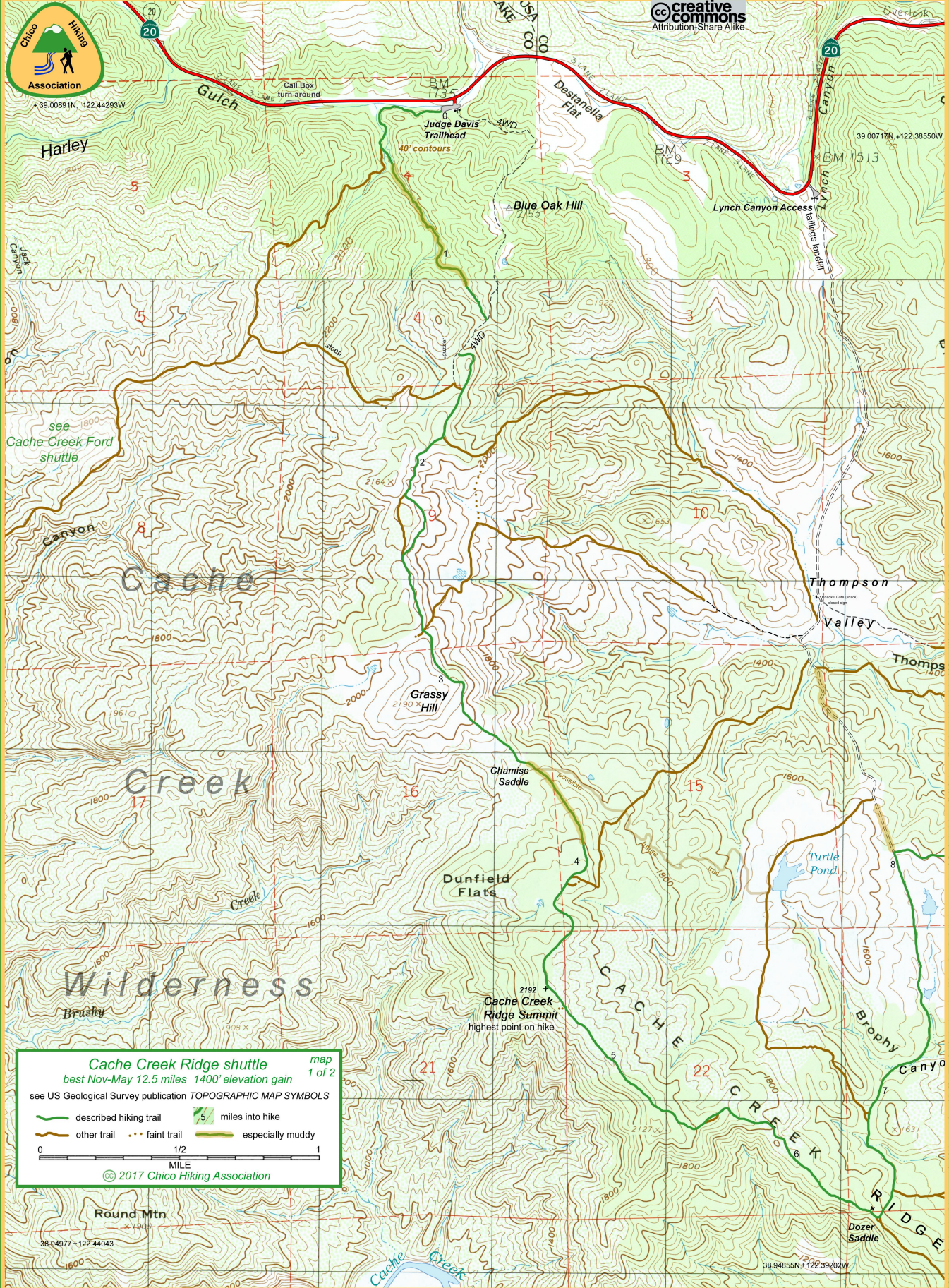


Drive: 1:40 Hike: CHALLENGING Season: Nov-May (check stream gauge after storms) (hot June-Oct)







Cache Creek Ridge shuttle map 1 of 2
best Nov-May 12.5 miles 1400' elevation gain
see US Geological Survey publication TOPOGRAPHIC MAP SYMBOLS

	described hiking trail		5 miles into hike
	other trail		faint trail
	especially muddy		

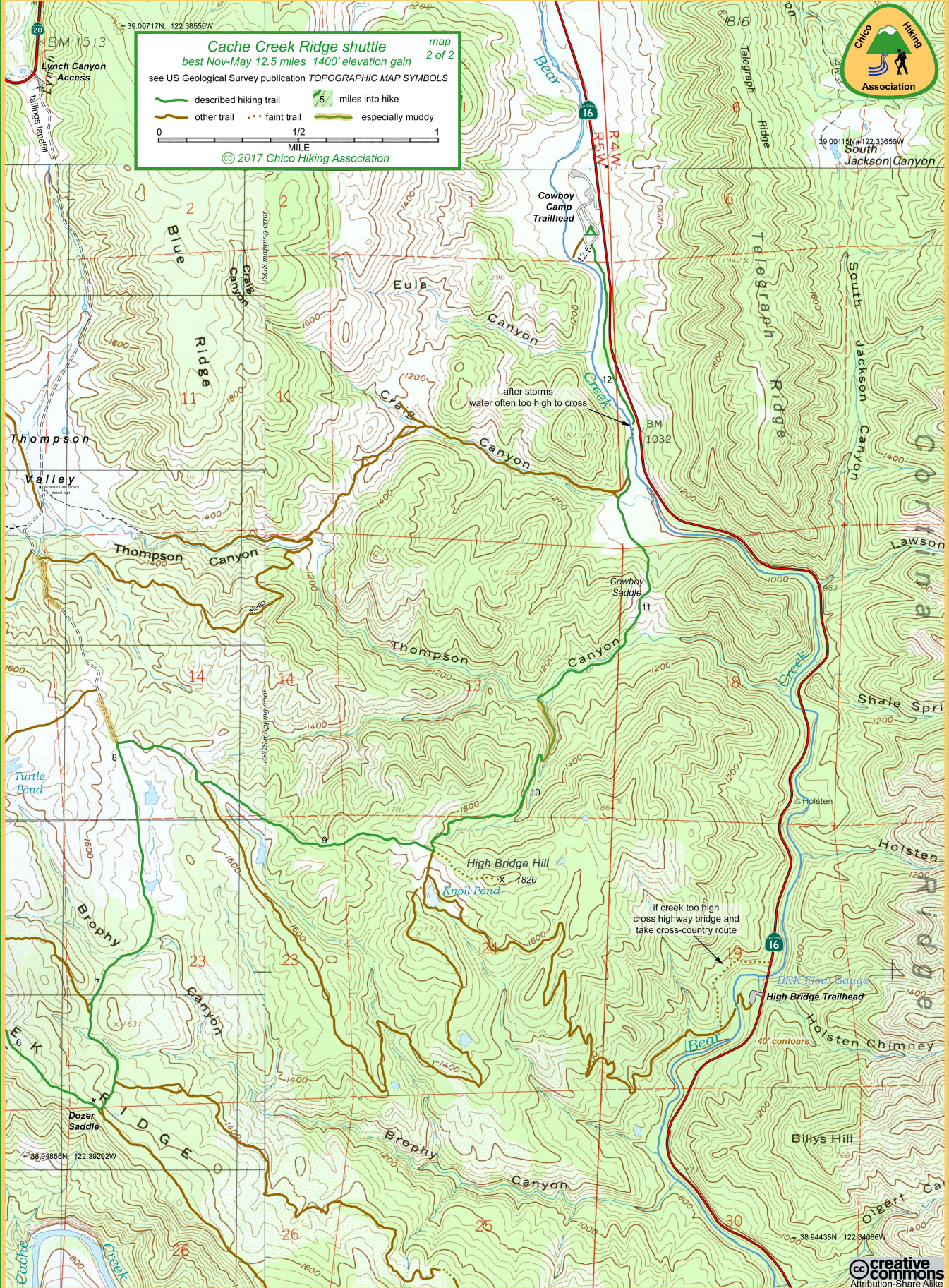
0 1/2 1
MILE

© 2017 Chico Hiking Association

Round Mtn

38.04977, 122.44043

38.94855N, 122.39202W



Cache Creek Ridge shuttle map 2 of 2
best Nov-May 12.5 miles 1400' elevation gain
see US Geological Survey publication TOPOGRAPHIC MAP SYMBOLS

described hiking trail 5 miles into hike
other trail faint trail especially muddy

0 1/2 1 MILE

© 2017 Chico Hiking Association



39.00115N, 122.33656W
South Jackson Canyon

if creek too high cross highway bridge and take cross-country route