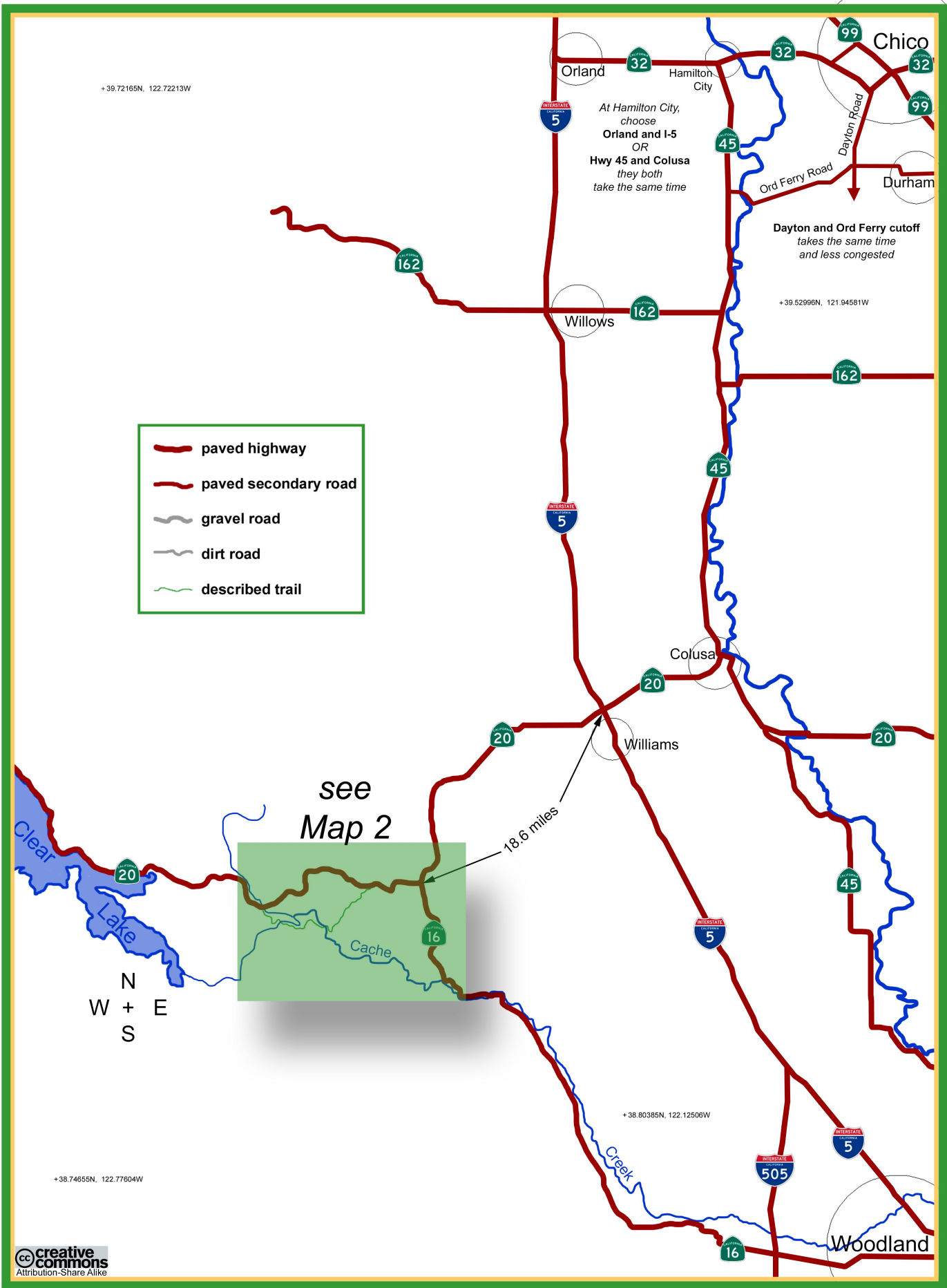
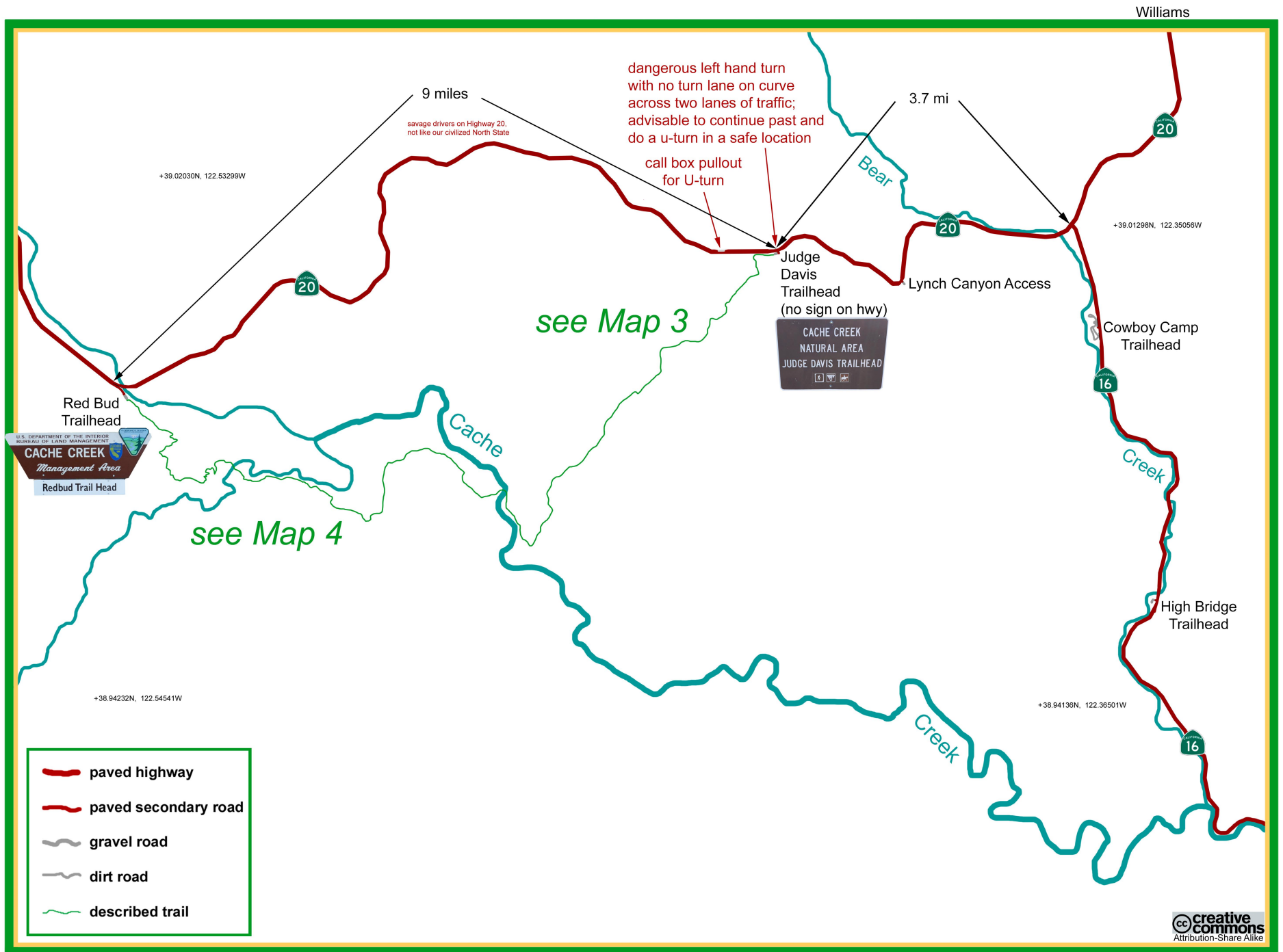
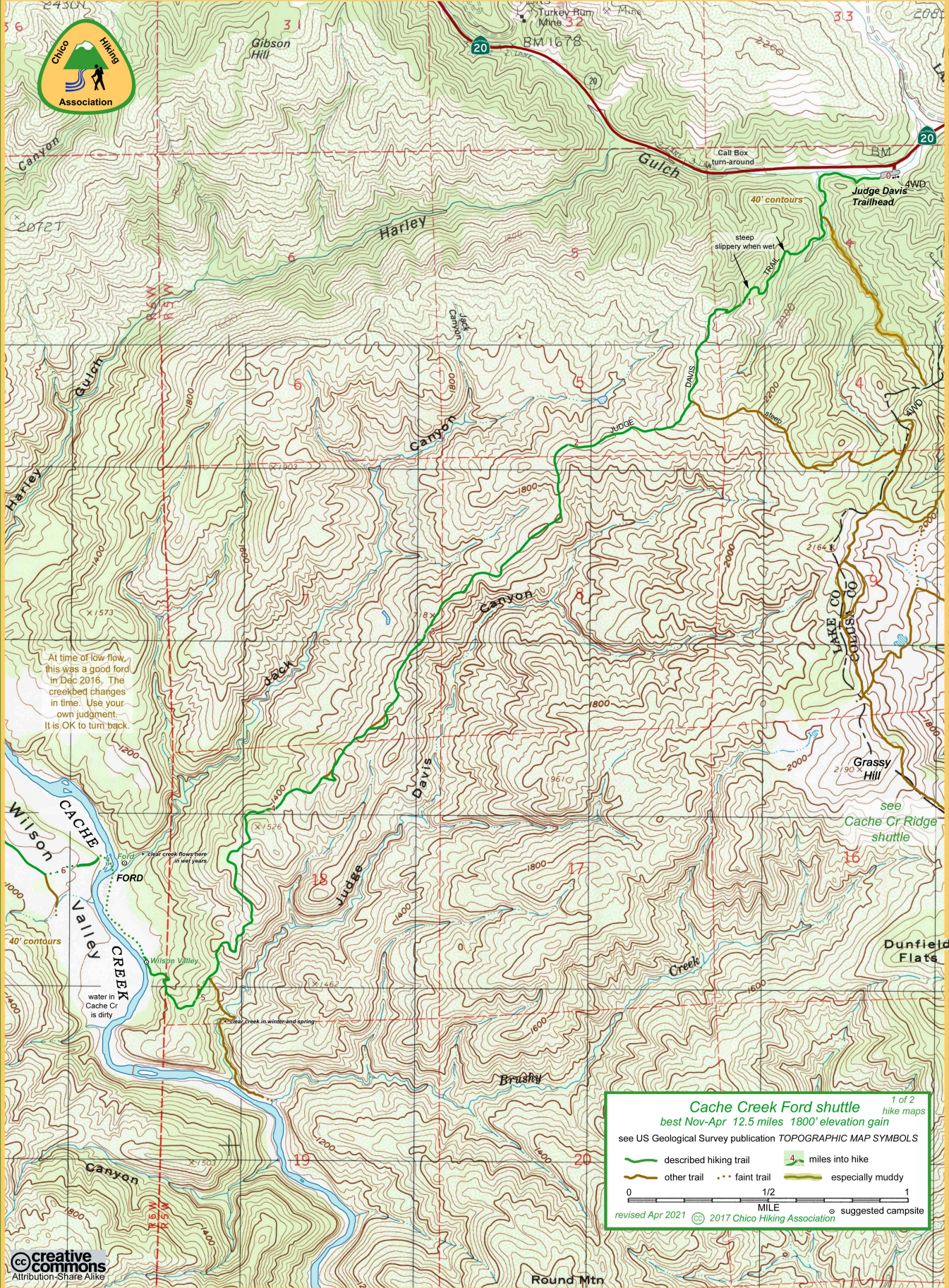


Drive: 1:55 Hike: CHALLENGING Season: Nov-Apr (creek must be low; check flow gauges online) (hot May-Oct)



Cache Creek Ford shuttle ▪ Map 1 of 4





At time of low flow, this was a good ford in Dec 2016. The creekbed changes in time. Use your own judgment. It is OK to turn back.

Clear creek flows here in wet years

water in Cache Cr is dirty

Clear creek in winter and spring

Cache Creek Ford shuttle

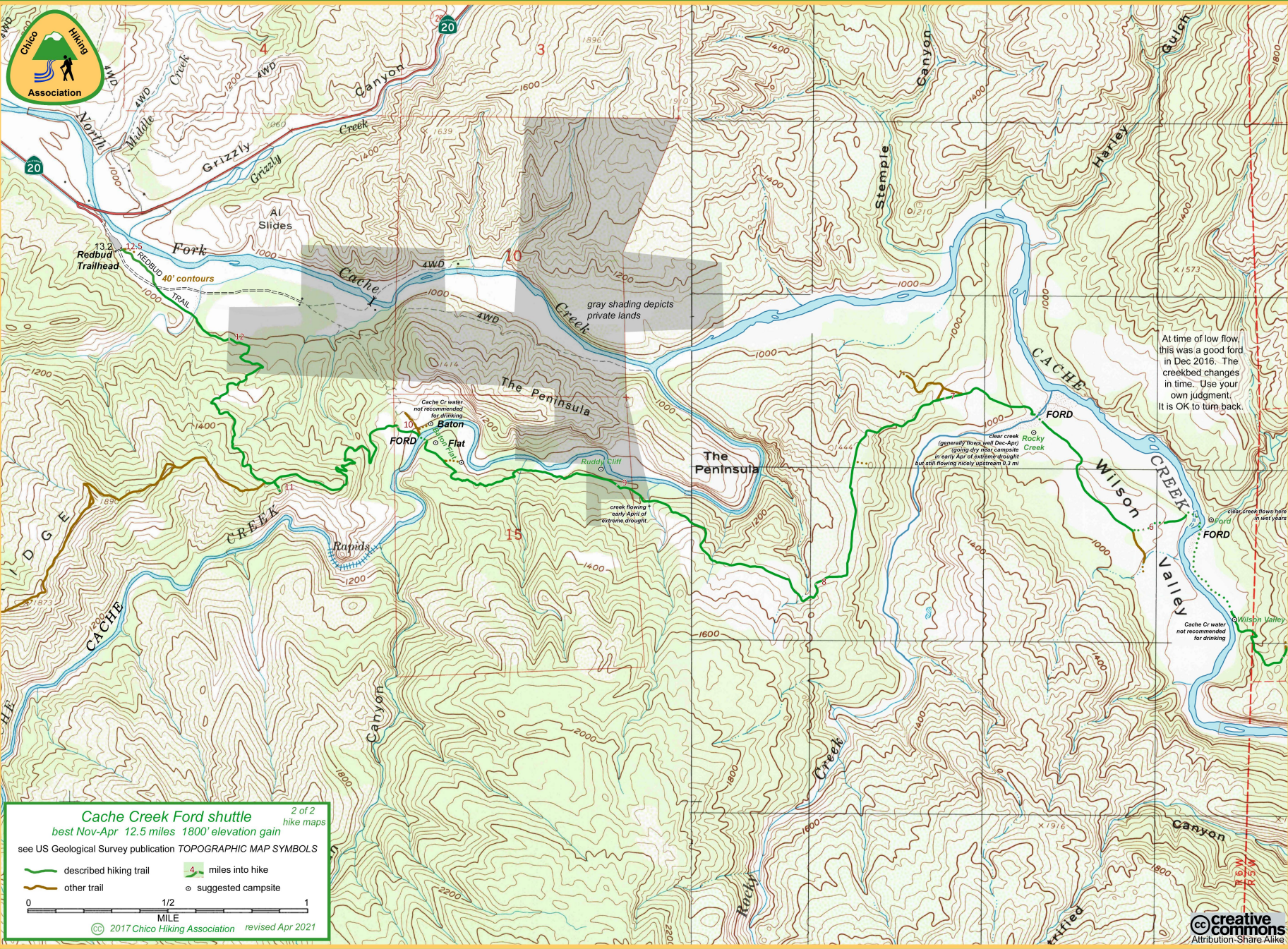
best Nov-Apr 12.5 miles 1800' elevation gain

see US Geological Survey publication TOPOGRAPHIC MAP SYMBOLS

- described hiking trail
- other trail
- faint trail
- especially muddy
- miles into hike



revised Apr 2021 © 2017 Chico Hiking Association suggested campsite



At time of low flow, this was a good ford in Dec 2016. The creekbed changes in time. Use your own judgment. It is OK to turn back.

clear creek (generally flows well Dec-Apr) (going dry near campsite in early Apr of extreme drought but still flowing nicely upstream 0.3 mi)

clear creek flows twice a year

Cache Cr water not recommended for drinking

Cache Creek Ford shuttle

best Nov-Apr 12.5 miles 1800' elevation gain

see US Geological Survey publication TOPOGRAPHIC MAP SYMBOLS

described hiking trail

other trail

miles into hike

suggested campsite

0

1/2

1

MILE

©

2017 Chico Hiking Association

revised Apr 2021

2 of 2

hike maps

