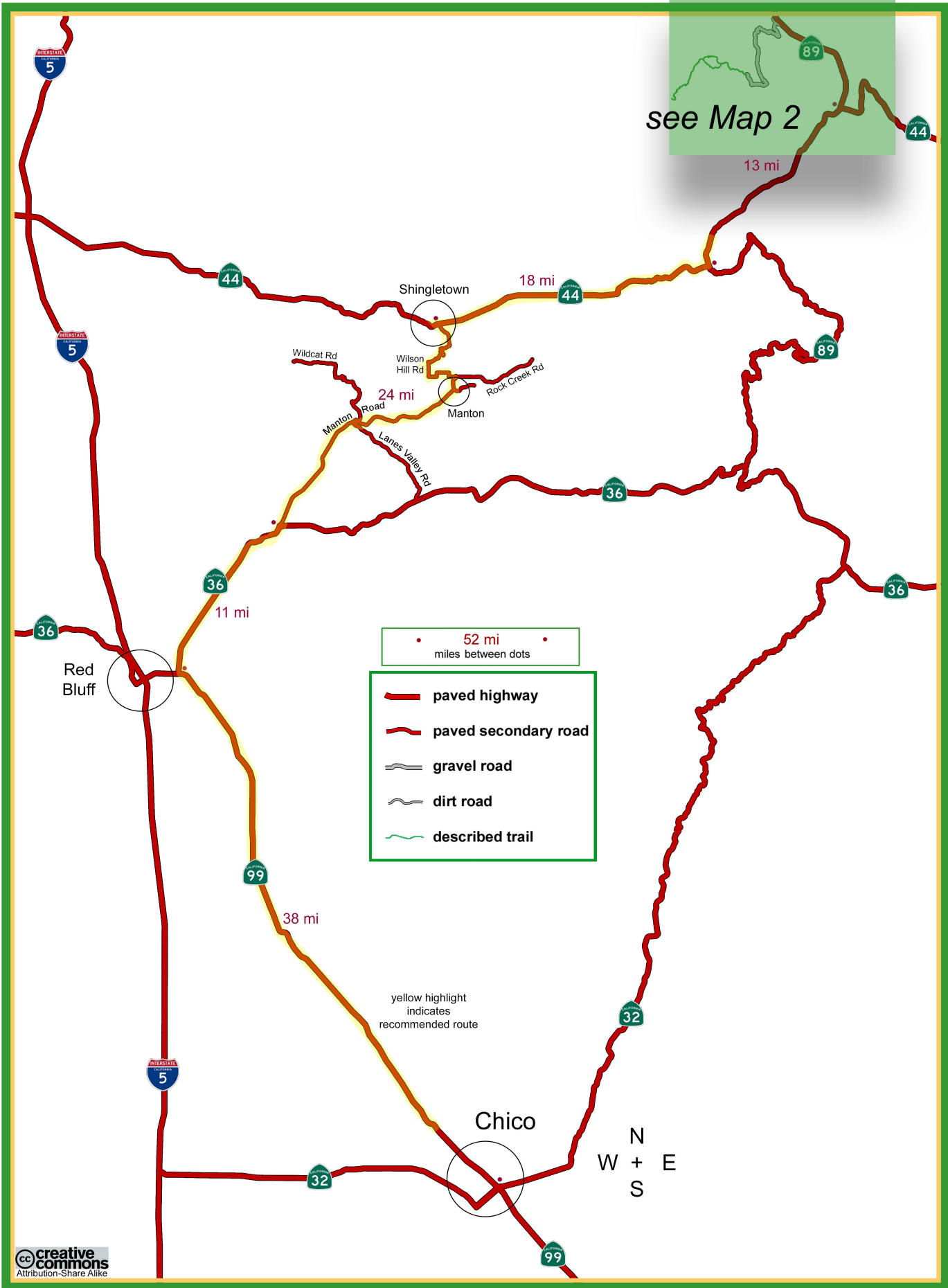


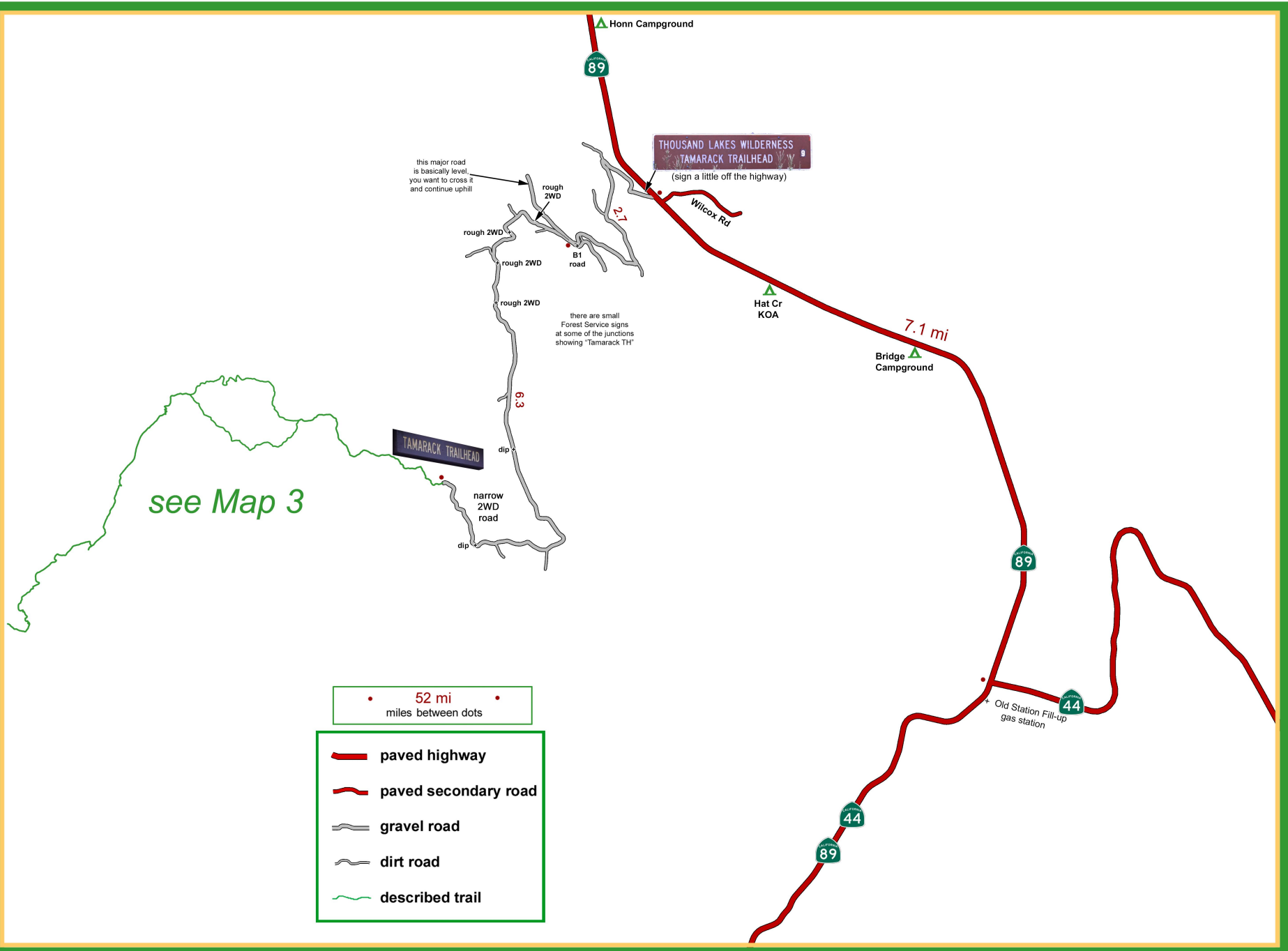
Drive: 2:25 Hike: MODERATE BACKPACK Season: Aug-Sept (nights long Oct, snow Nov-Jun, bugs July)

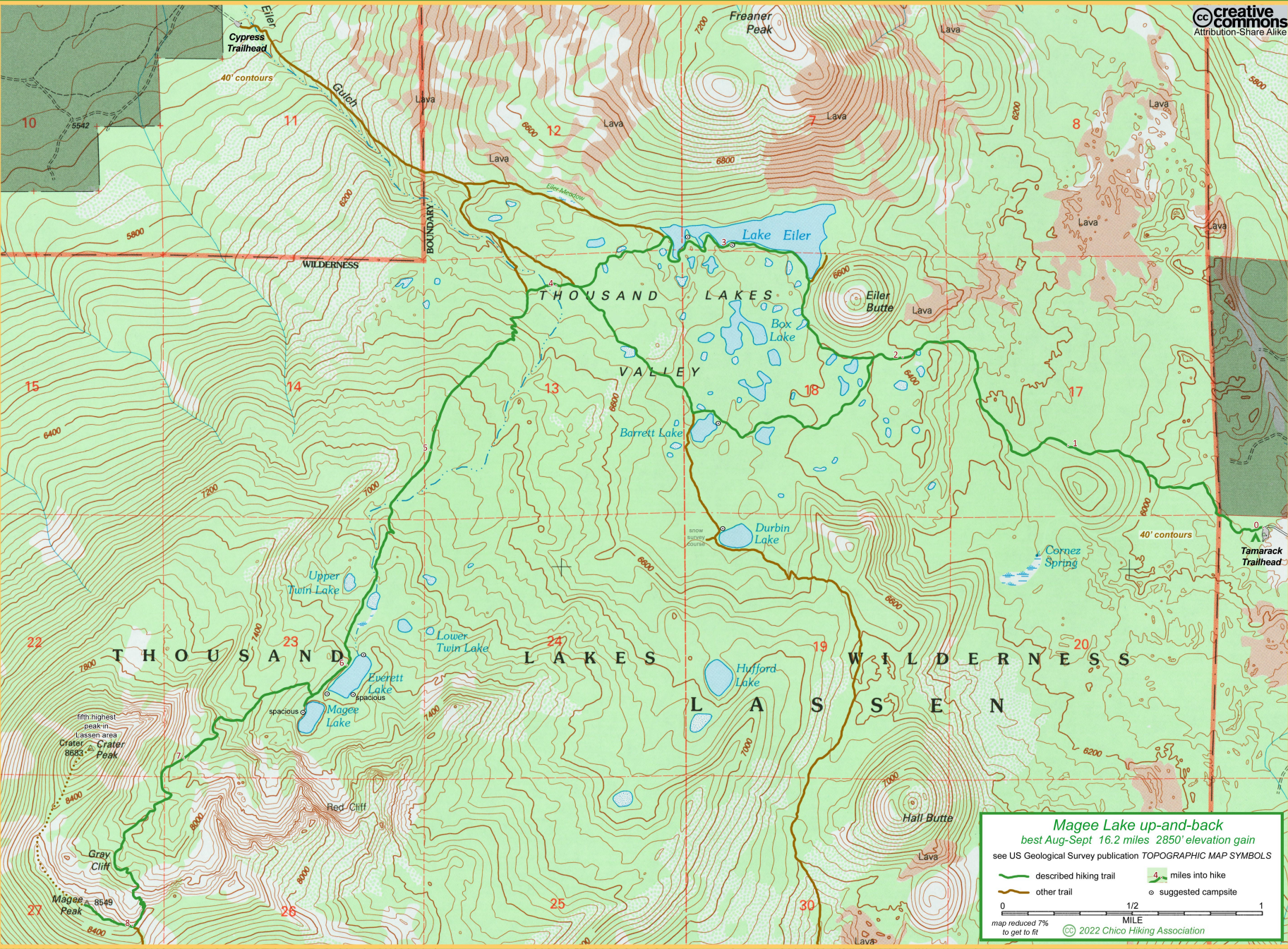


© 2022 Chico Hiking Association

Magee Lake up-and-back ▪ Map 1 of 3







**Magee Lake up-and-back**  
best Aug-Sept 16.2 miles 2850' elevation gain  
see US Geological Survey publication TOPOGRAPHIC MAP SYMBOLS

- described hiking trail
- other trail
- 1/4 miles into hike
- suggested campsite

0 1/2 1  
MILE  
map reduced 7%  
to get to fit

© 2022 Chico Hiking Association