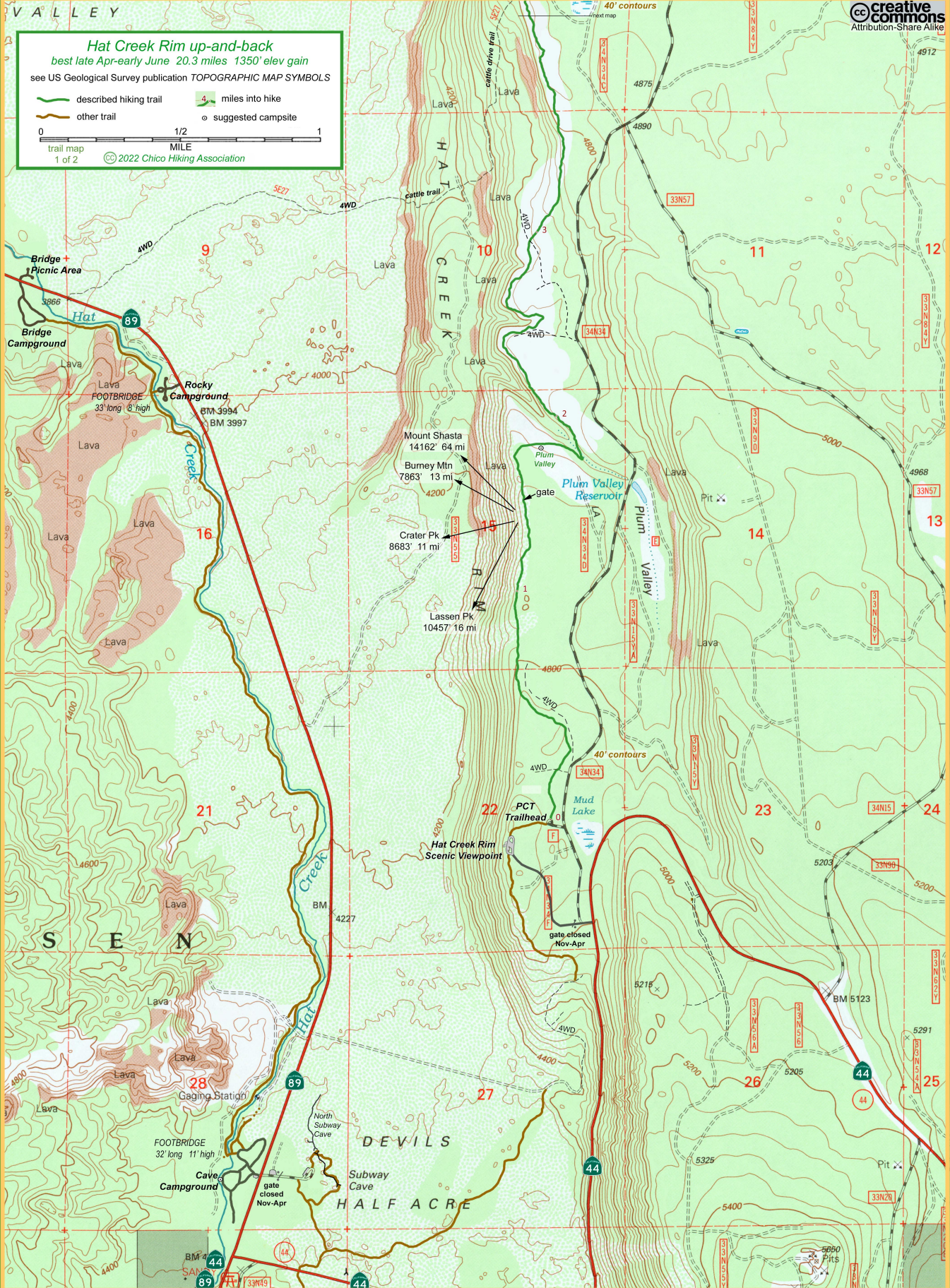




**Hat Creek Rim up-and-back**  
best late Apr-early June 20.3 miles 1350' elev gain  
see US Geological Survey publication TOPOGRAPHIC MAP SYMBOLS

described hiking trail  
other trail  
miles into hike  
suggested campsite

0 1/2 1  
trail map MILE  
1 of 2 © 2022 Chico Hiking Association





Buttonhook  
Landing Zone

Hat Creek Rim  
Hang Gliding and  
Paragliding Area

South  
Launch

5122  
communication tower

10.5 (includes side trip to Lost Spring on hike in, but not on hike out)  
Juniper

+ Hat Creek Rim High Point 5130'

Mount Shasta  
14162' 61 mi

27 Burney Mtn  
7863' 12 mi

Crater Pk  
8683' 13 mi

Lassen Pk  
10457' 18 mi

Mount Shasta  
14162' 62 mi

Burney Mtn  
7863' 12 mi

Crater Pk  
8683' 12 mi

Lassen Pk  
10457' 19 mi

20' contours  
40' contours

## Hat Creek Rim up-and-back

best late Apr-early June 20.3 miles 1350' elev gain

see US Geological Survey publication TOPOGRAPHIC MAP SYMBOLS

described hiking trail

other trail

4 miles into hike

⊙ suggested campsite

0 1/2 1  
MILE

trail map  
2 of 2

© 2022 Chico Hiking Association