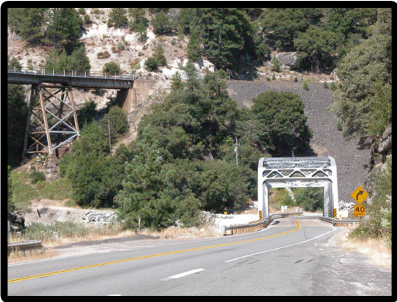


Drive: 1:05 Hike: SHORT Season: Oct-May (except when snow below 3500') (hot June-Sept)

- paved highway
- paved secondary road
- gravel road
- dirt road
- described trail

trail is on steep slopes
do not attempt if snow on trail

see
Map 2



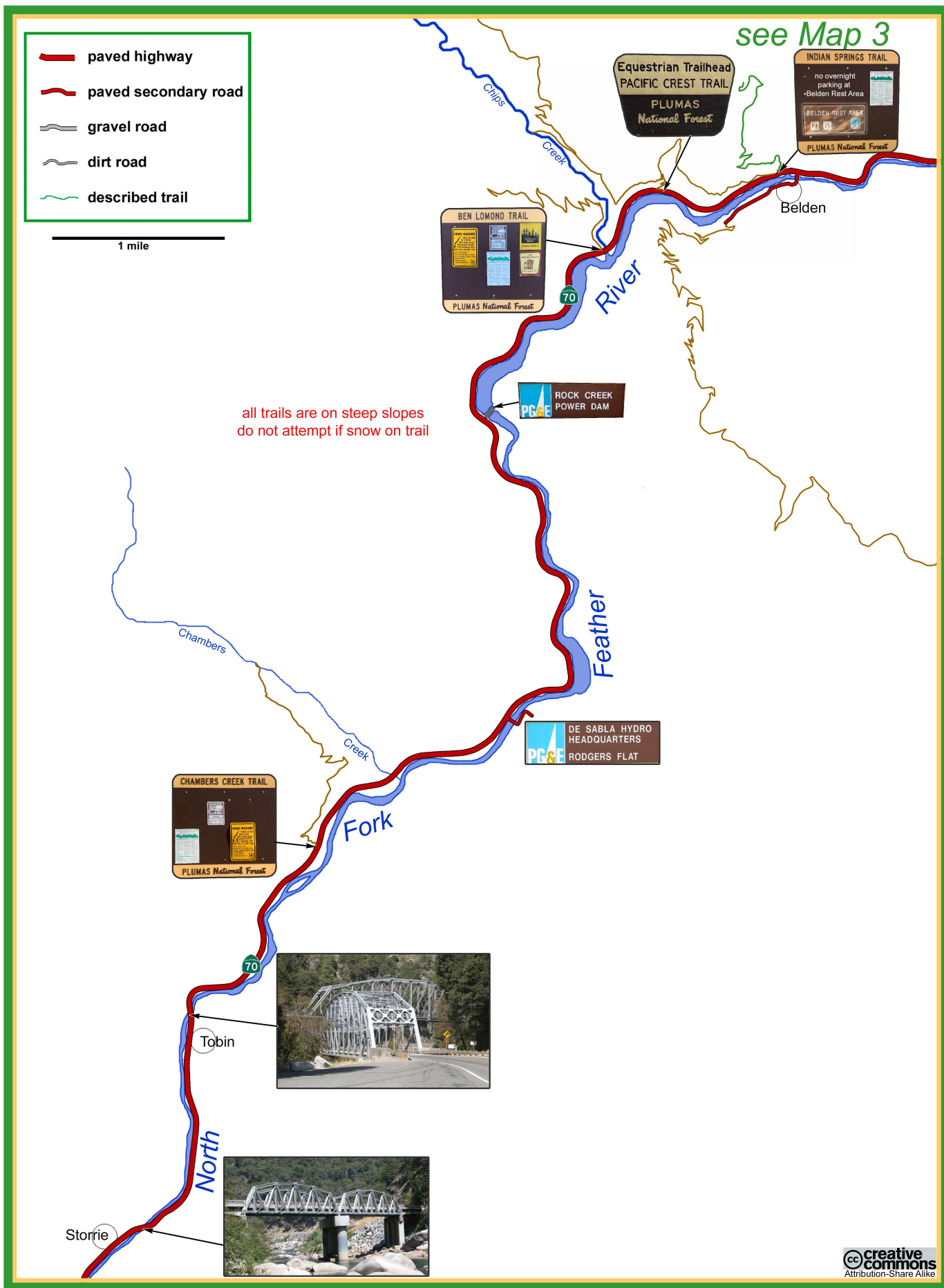
Rock Creek Bridge

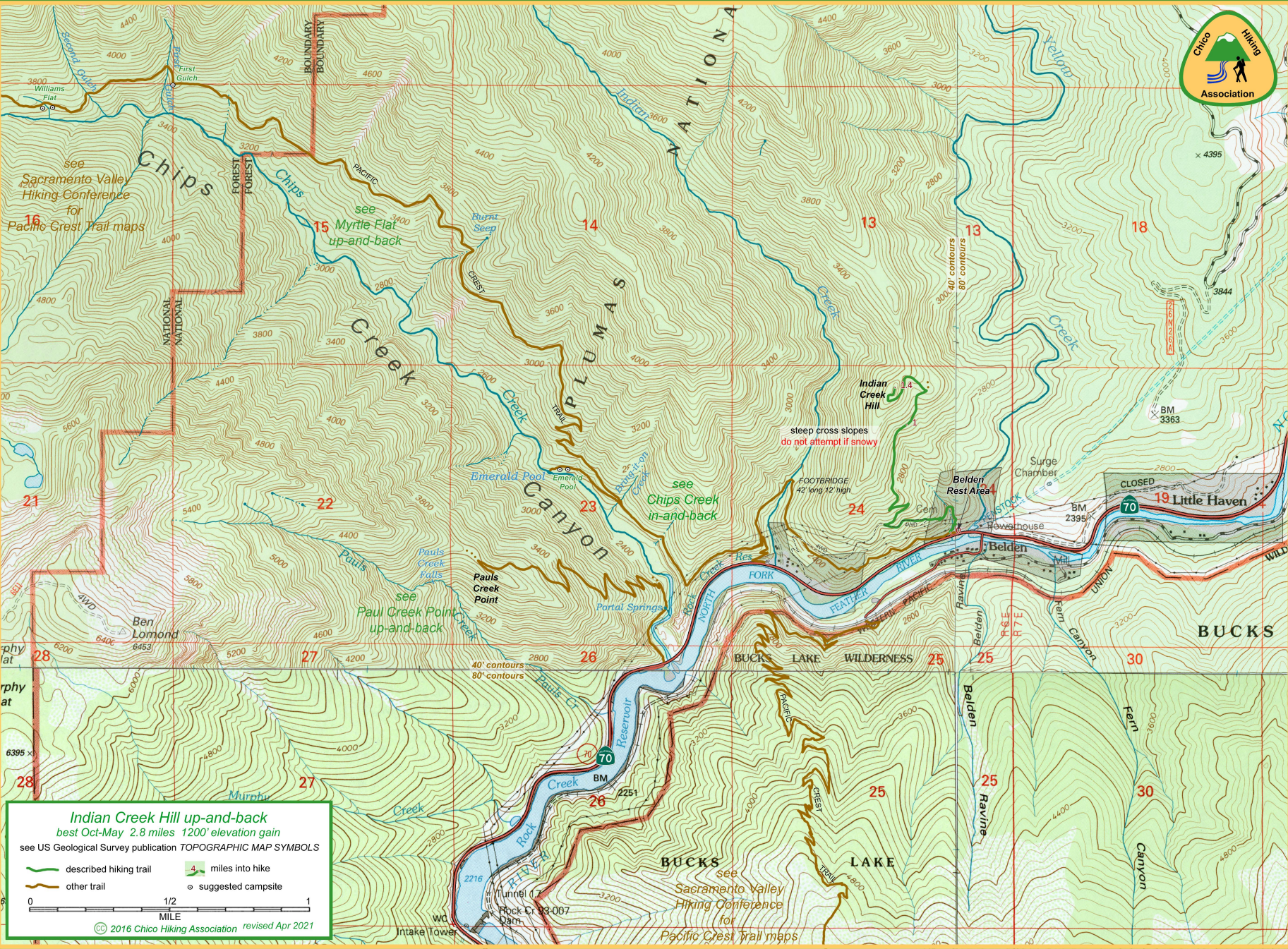


Pulga Bridge



Indian Creek Hill up-and-back ▪ Map 1 of 3





Indian Creek Hill up-and-back
best Oct-May 2.8 miles 1200' elevation gain
see US Geological Survey publication TOPOGRAPHIC MAP SYMBOLS

described hiking trail 4 miles into hike
other trail suggested campsite

0 1/2 1
MILE

© 2016 Chico Hiking Association revised Apr 2021