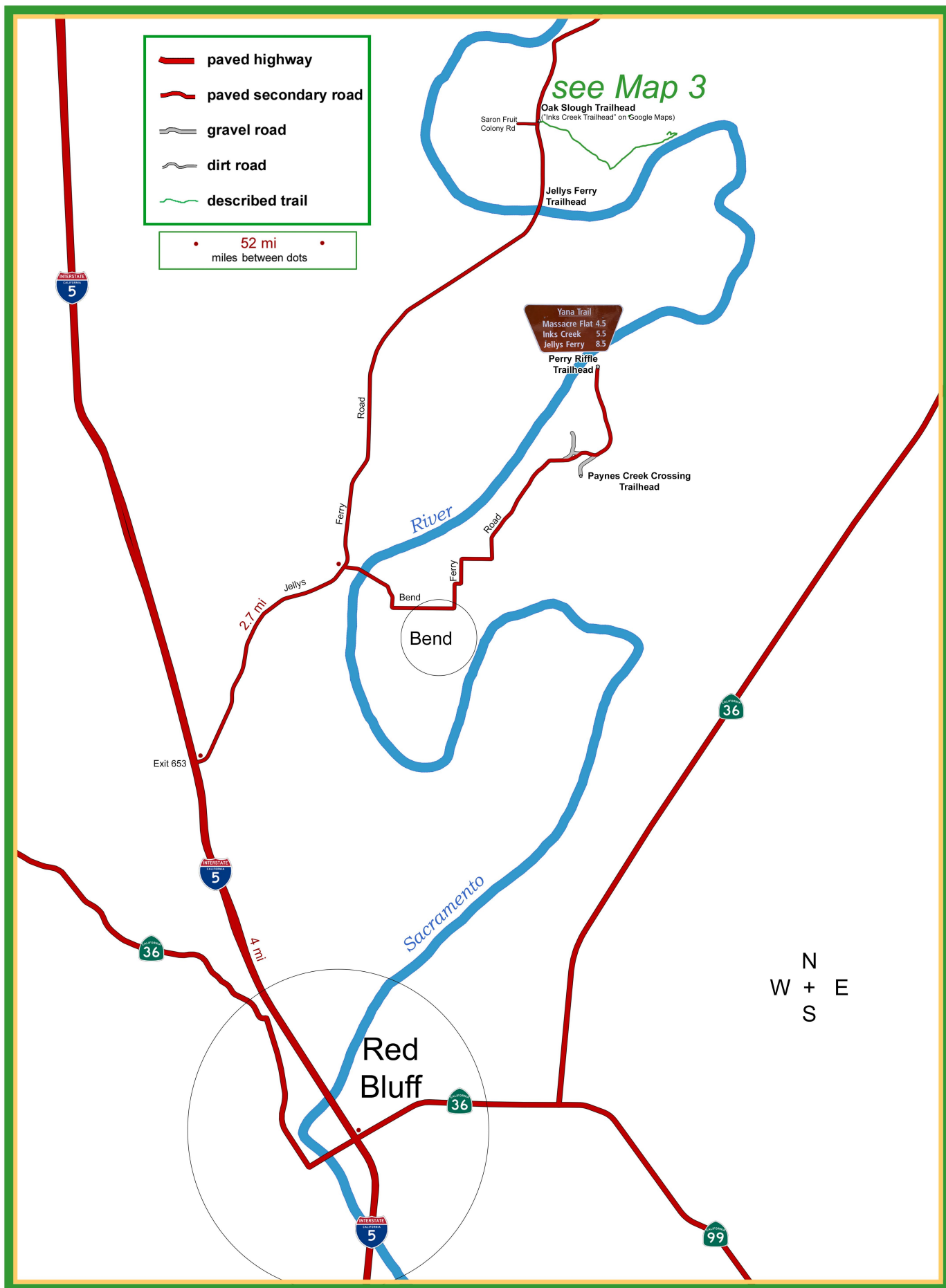


Drive: 1:00 Hike: SHORT Season: Nov-Apr (hot May-Oct)

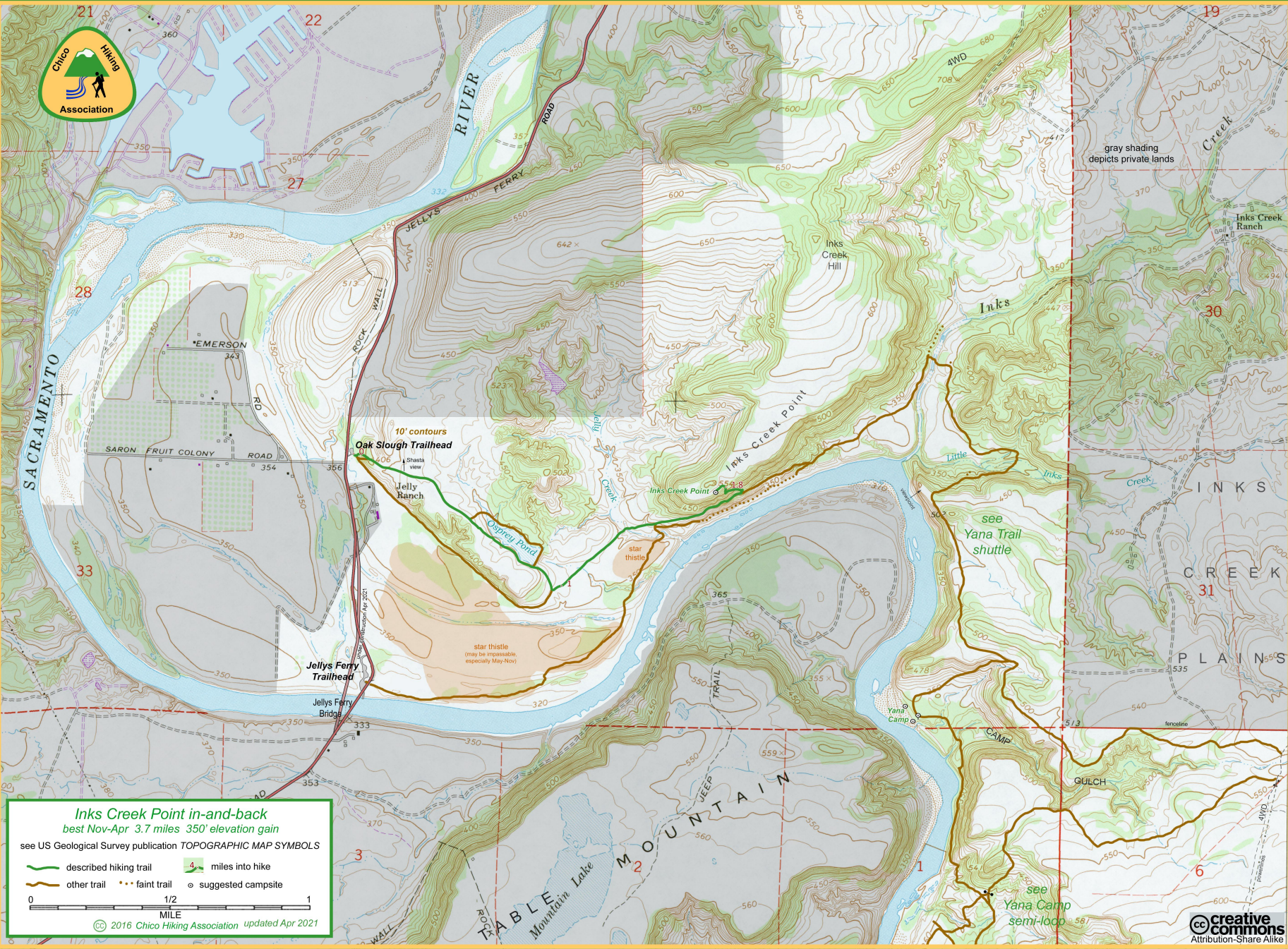


Inks Creek Point in-and-back ▪ Map 1 of 3



*Inks Creek Point in-and-back ▪ Map 2 of 3*





### Inks Creek Point in-and-back best Nov-Apr 3.7 miles 350' elevation gain

see US Geological Survey publication TOPOGRAPHIC MAP SYMBOLS

- described hiking trail
- other trail
- 4 miles into hike
- faint trail
- suggested campsite

0 1/2 1  
MILE

© 2016 Chico Hiking Association updated Apr 2021