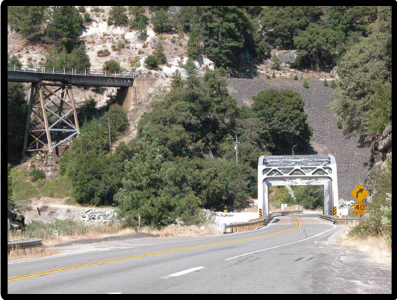


Drive: 1:00 Hike: EASY Season: Oct-June (except when snow below 4000') (hot July-Sept)

- paved highway
- paved secondary road
- gravel road
- dirt road
- described trail

trail is on steep slopes  
do not attempt if snow on trail

see  
Map 2



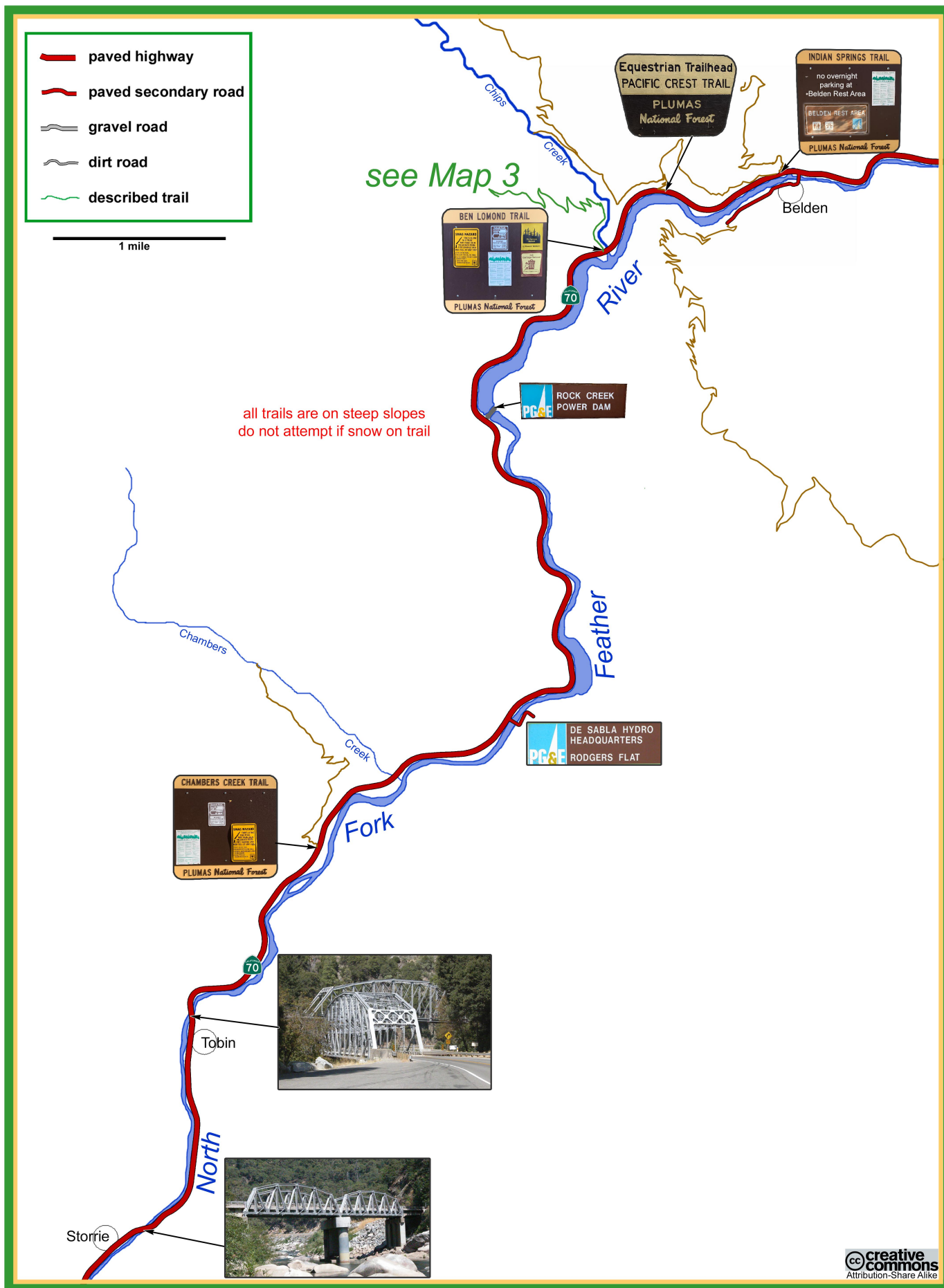
Rock Creek Bridge



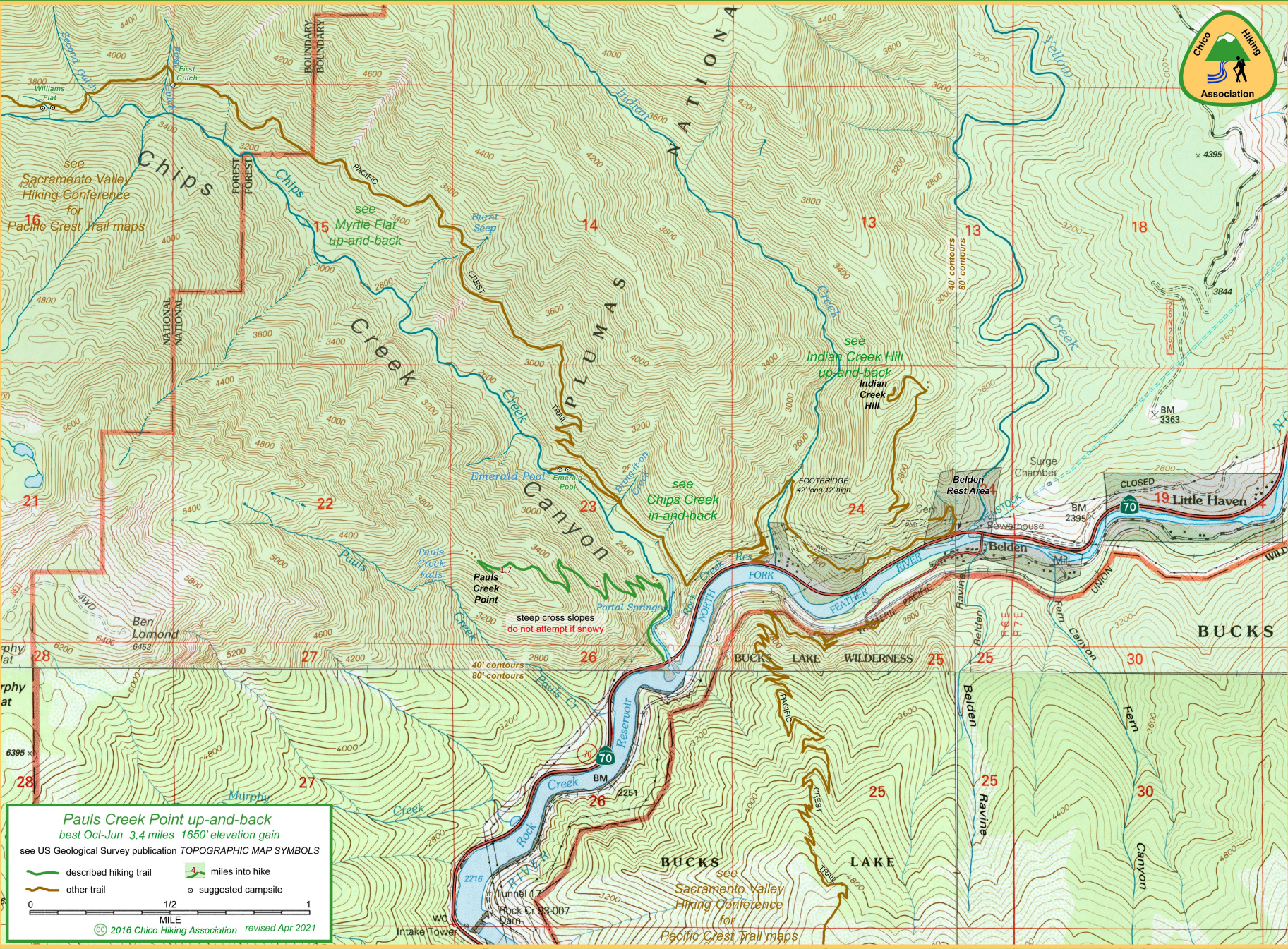
Pulga Bridge





Pauls Creek Point up-and-back ▪ Map 1 of 3







best Oct-Jun 3.4 miles 1650' elevation gain

 described hiking trail  
 other trail

0 1/2

© 2016 Chico Hiking Association revised Apr 2021