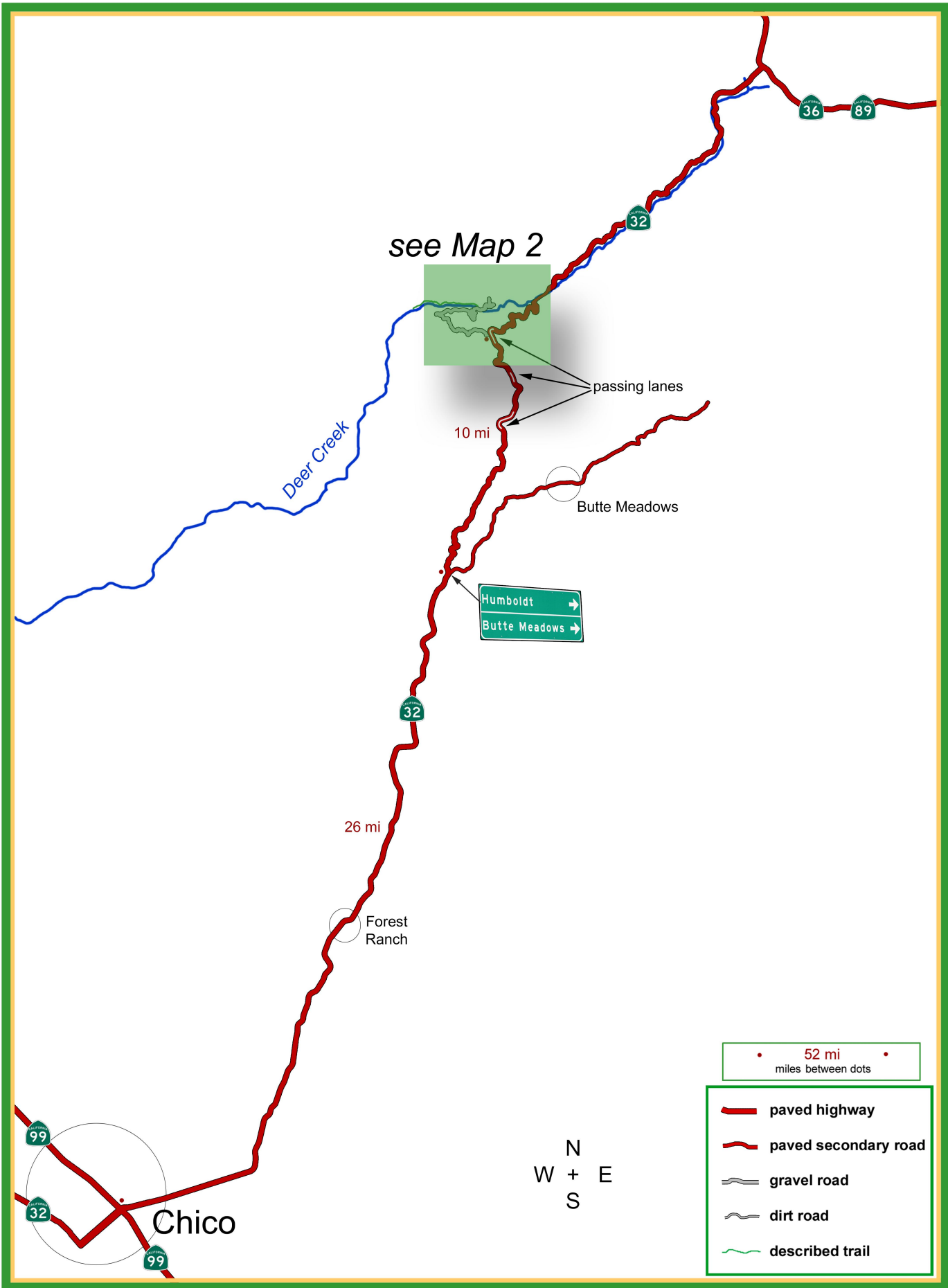
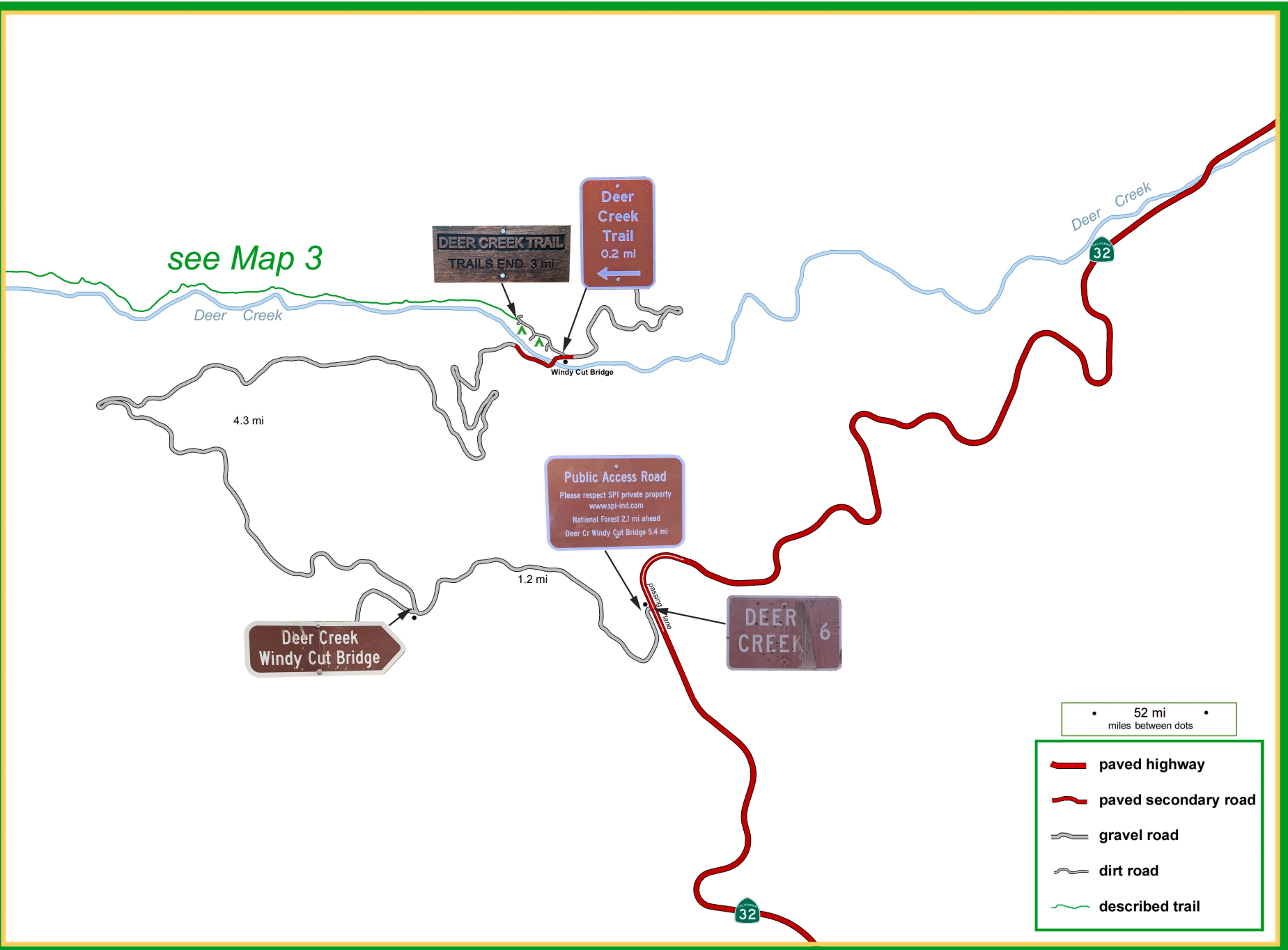
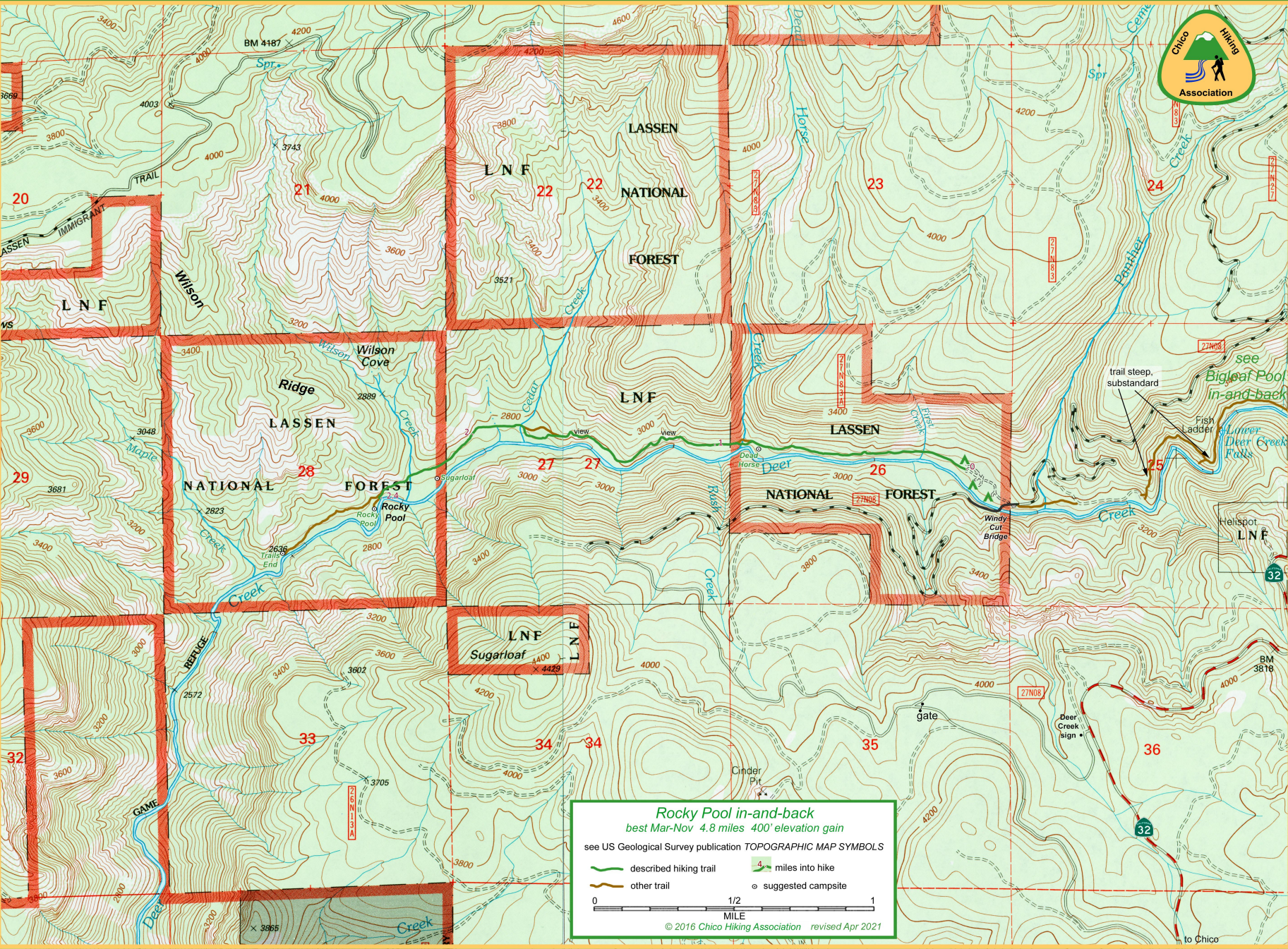


Drive: 1:00 Hike: EASY Season: Mar-Nov except when snow below 4,000' (cold Dec-Feb)



Rocky Pool in-and-back ▪ Map 1 of 3





Rocky Pool in-and-back
best Mar-Nov 4.8 miles 400' elevation gain

see US Geological Survey publication **TOPOGRAPHIC MAP SYMBOLS**

- described hiking trail
- other trail
- 4 miles into hike
- suggested campsite

0 1/2 1 MILE

© 2016 Chico Hiking Association revised Apr 2021

to Chico